



HAYWARD LA HONDA MUSIC CAMP

MUSIC, FUN, AND FRIENDSHIP!

JULY 15-22, 2023

MAKING MUSICAL MEMORIES FOR GENERATIONS
IN THE BEAUTIFUL REDWOODS
OF THE SANTA CRUZ MOUNTAINS

2023 Handbook

Hayward La Honda Music Camp Handbook

Table of Contents

- 2023 Camp Registration 3
 - Attendance Requirements..... 3
 - Mandatory Paperwork..... 4
 - Transportation to Camp..... 4
- Camp Overview 5
 - Hayward La Honda Music Camp Staff..... 5
 - Health and Safety..... 5
 - Medications..... 5
 - Camp Accommodations 5
 - Daily At- Camp Routine 6
 - Contacting your Camper at Camp..... 6
- First Day of Camp and Registration Check-In 6
 - Registration Check-In..... 6
 - First Day of Music Camp Begins!! 8
 - First Day Audition Preparation..... 9
- What to Pack for Camp 11
 - Personal Belongings..... 11
 - Musical Instrument 11
- Lost and Found..... 12
- Camp Decorum 12
- General Daily Schedule (subject to slight changes) – 13
- Final Concert 14
- FAQs – Frequently Asked Questions 15
- Rules of Camp..... 17

Welcome to the 60th Annual Hayward La Honda Music Camp!!



We are delighted that you have chosen to join us this year for an exceptional week of music and Camp FUN! The Hayward La Honda Music Camp Program is geared to ensuring each one of our Campers are provided in-depth music education and carefree summer camp FUN!

Hayward La Honda Music Camp is a non-profit organization whose mission is to inspire young musicians to achieve their best musically, to enjoy a great social and recreational experience, and take-home memories that will last a lifetime. The Camp is organized to challenge students in a variety of creative pursuits and is devoted to the development of musicianship for students grades 6 – 12 (aged 11-19). This is accomplished through a highly supportive Camp structure and concentrated program of rehearsal, performance, study, recreation, and general camp life in the beautiful surroundings of YMCA Camp Jones Gulch.

We maintain a high ratio of staff to campers, about one staff person for every 4 campers. This helps guarantee a safe, healthy, and happy camp environment. Staff at camp include camp leadership, camp nurse, music directors, music faculty, music instructors, counselors, and counselors-in-training. All staff has a proven passion for teaching and mentoring youth, and for making sure that all our campers have an exceptional musical and social experience at camp!

We are pleased to be celebrating our 60th year of music education. Our Camp has a strong tradition of passionately supporting musicianship for all students regardless of financial need. This has been met through the generosity of individuals and businesses. The support of our Donors and Sponsors is vital to the continuing success of our scholarship program.

2023 Camp Registration

This is a final acceptance of your registrant's application to the Hayward-La Honda Music Camp. We have reviewed your application and you are considered fully enrolled in our 2023 music camp, July 15 - 22, 2023. If there is a balance due, your child will be considered fully accepted upon receipt of the full remaining balance. **All remaining balances are due before July 15th.**

If you have received a tuition scholarship from an organization outside of Hayward La Honda Music Camp, please make sure these have been received by our office and credited to your account. Students who qualified for Honor Band or Honor Orchestras this school year must send in a copy of the concert program with the Camper's name in it to the camp office PO Box 764, Hayward, CA 94543 to qualify for the discount. As the date of camp draws nearer, we will send out updates as needed. Please make sure that each of your registered Campers receives an email. Below is information about what to bring to camp and activities while at camp. Please read it in its entirety. If you have any questions, please email us at lahondamusiccamp@gmail.com.



Attendance Requirements

Hayward La Honda Music Camp is a residential camp focused on the study of music. Each annual session is carefully designed to give campers a coherent and progressive musical experience, both in ensembles and on individually on their instrument. This begins at check-in and ends with check-out on concert day. ***All campers are expected to stay for the entire 8-day session.*** It is difficult to accommodate late arrivals, early departures, or mid-session breaks.

Mandatory Paperwork

Please complete and bring with you to Camp Registration and Camper Drop-off. Camp paperwork is due on Registration Day. Mandatory paperwork for camp includes:

- **Evidence of a Medical History Form:** A multi-page form where we ask you to tell us about your camper's allergies, medications, or any other issues we need to know about to take care of your child. **Note: This form requires a "well-child" signature certifying that your Camper is healthy and illness-free 72 hours prior to Camp.**
- **Prescription Medication for Campers Form:** All medication, both prescription and over-the-counter, must be in its original packaging. Prescriptions must be accompanied by physician written orders.
- **OTC Form:** Over the Counter medication permission form. Provides Camp Nurse permission to provide your Camper access to Over-the-Counter medication (i.e., ibuprofen, throat lozenges, allergy medication, topical first aid).
- **Insurance Information Form*:** Please copy your insurance information, usually a card, front and back and attach it to this form.
- **YMCA Jones Gulch Liability Waiver:** Just add Camper name(s), sign, and date.

**If your family does not currently have health insurance coverage, please let us know, we have an alternative form that must be submitted.*

These forms were attached to your registration confirmation email as file attachments. They are also available on our website at www.lahondamusiccamp.com.

Transportation to Camp

Hayward La Honda Music Camp does not provide transportation to or from Camp. Please plan to transport your Camper to Camp or make arrangements for their means of transport. If driving your child to camp, plan to **arrive on Saturday, July 15th, 2023, between 11:00 AM (sorry no early arrivals) and 12:00 Noon**. The drive from Hayward to La Honda (YMCA Jones Gulch) camp is about 60 miles and takes approximately 1½ hours from Hayward, and a little more than an hour from San Francisco. Check our web site for directions to camp. Google Maps will sometimes take you a more difficult route:

Hayward-La Honda Music Camp at Jones Gulch Camp

11000 Pescadero Road, La Honda, CA 94020

Front Office Phone: (650) 747-1200

Hayward La Honda Music Camp Phone Number: 510.409.9388

PLEASE NOTE: BRING A BAG LUNCH FOR YOUR CAMPER AND YOUR FAMILY to Camp Check-In.

Neither Hayward La Honda Music Camp or the YMCA will be providing Breakfast or Lunch on Registration Day (the First Day) to Campers or Camper Families.

We do not serve dinner until 5:45 PM on Saturday. If you arrive in the afternoon for registration, please make sure you plan for lunch or snacks for your Camper(s). We cannot emphasize this enough, your Campers will be hungry well before dinner, which may comprise their first day and transition into Camp, so please do come prepared! The YMCA will **not** be selling food during registration. Please do bring reusable drink containers, drinking water is available for re-fillable drink containers. Hayward La Honda Music Camp may have some snacks available for purchase on the Band Shell, although they tend run out early.

Please also note: YMCA rules prohibit pets of any kind at the Saturday registration or at the final Saturday concert. Certified service animals are permitted, we only ask for advance notice, so arrangements may be made with the YMCA.

Camp Overview

Hayward La Honda Music Camp Staff

Staff at camp fall into three main areas:

- **Camper Care** (Counselors, Staff Coordinators, Recreation Directors, Camp Registered Nurse, Camp Director, Camp Operations and Logistics)
- **Music Education** (Directors, Music Faculty, Music Coaches)
- **SF YMCA Camp Staff** (Kitchen Personnel, Operations & Maintenance Personnel, Camp Store Staff)

All staff is thoroughly screened and vetted including fingerprinting and a background check with the Department of Justice. Each Camper's primary interaction will be with their assigned counselor (and CIT). Staff Coordinators oversee the teaching and counseling staff, and work with Camp Recreation Directors to plan camp activities. The Camp Director, Camp Administration and Camp Nurse are available to address any parent or camper concerns that arise during the session or before.

Health and Safety

All campers are required to submit a Wellness approval for camp participation. The information you provide on the confidential Medical History Form provides an opportunity for Camp Staff to effectively accommodate any special help your child might require. Please share the health information requested with the Camp Registered Nurse and be assured that it is handled in the strictest HIPPA confidence and kept with your child's medical records in the Infirmary (located in Gyro). In addition, campers are screened by the Camp Registered Nurse for medical problems at check in on the first day.

Medications

All medication, both prescription and over-the-counter, must be in its **original packaging**. Prescriptions must be accompanied by physician written orders. Orders must include the camper's full name, dosage amount, delivery times, and any limitations or restrictions. YMCA Jones Gulch and Hayward La Honda Music Camp does not allow Campers to be in possession of medication regardless of if this medication is prescribed by a doctor or purchased over-the-counter. Hayward La Honda Music Camp has a Registered Nurse on-site full-time throughout Camp session to distribute medication and ensure your Camper takes as prescribed. Campers can have vitamins in their possession; however, they are not allowed to share this with any of their fellow Campers or Music Camp staff.

Medical issues. Please be advised that La Honda Music Camp has revised our policy regarding management of Acute illness at camp. All campers and staff must be free from all acute illness related symptoms for 72 hours prior to camp registration Check-In on July 15, 2023. This policy will also be extended to individuals who leave camp due to illness and wish to return later. This amendment will be in effect regardless of a Physician release stating health clearance to resume normal activity.

Camp Accommodations

Campers are sorted by age and gender into groups and assigned to gender-specific age group cabins:

- **Senior Camp:** Campers entering 9th grade in the fall of 2023 to one year post-2023 graduation
 - Senior Girls
 - Senior Boys
- **Junior Camp:** Campers entering 6th grade to 8th grade in the fall of 2023. If your Camper just graduated/completed 8th grade they will be placed in Senior Camp.
 - Junior Girls
 - Junior Boys

Each Cabin consists of small dorm room with 12 to 16 bunkbeds, and a bed for their Counselor (some cabins may also have a Counselor-in-Training (CIT) assigned). Each camper has a camp bed, a wooden bunk bed with mattress. Personal belongings and instruments are stored in the cabin. Many of the cabins are equipped with in-cabin bathrooms. Additional showers and toilets are in buildings nearby, and changing rooms are available for privacy. Senior and Junior Camps are located at opposite ends of the YMCA property (Junior Camp is in Wasiata, Senior Camp in Tolowa, please refer to the map on the last page of this handout). Boys and Girls cabins are separated within each camp.



Daily At- Camp Routine

Campers are kept busy and happy throughout the day with a carefully calibrated combination of class work, rehearsal time and recreation time. The General Daily Schedule is included as an attachment. Reveille is at 6:45 AM, Lights Out between 10:00 to 10:45 PM. In between are 3 fresh and healthy meals, large ensemble rehearsals, instrument sectionals, elective classes or jazz band rehearsal, afternoon free time with a selection of available activities (canoeing, archery, zip line, baseball, hiking, etc.), evening activity and tons of FUN!

Contacting your Camper at Camp

Hayward La Honda Music Camp is a residential camp focused on the emersion study of music. Hayward La Honda Camp does not encourage or accommodate check-in calls from home. There is NO cell service or camper wi-fi in camp. Please do not expect calls, texts, or WhatsApp or other “VIOP” calls from your Camper. However, we do have two (2) pay phones available at camp for calls home (yes, we will teach your Camper how to use a pay phone and can make change if they do not have the right coinage).

Mail from Home: You can send mail to your Camper at the YMCA Jones Gulch address (above). Please ensure all MAIL is to include Hayward La Honda Music Camp, camper’s name, and cabin name. Allow 2-3 days for mail to reach camp and get distributed:

Camper Name
Cabin Name
Hayward La Honda Music Camp
c/o YMCA Jones Gulch Camp
11000 Pescadero Road, La Honda, CA 94020

Family Emergency Contact: Parents who have a family emergency and need to get a hold of their child can contact the YMCA number and the message will be given to the camp administrative director who will contact the camper. However, Camp is quite large, and this may take anywhere from 45 minutes to 1.5 hours to retrieve your Camper and bring them to the YMCA Administration Building for a return call. We do everything in our power to expedite retrieval of your Camper and keep this time to a minimum, however, if your Camper is out on a hike, canoeing, or other remote activity this may take additional time.

First Day of Camp and Registration Check-In

Registration Check-In

Registration Check-In for both Senior and Junior Campers begins at 11:00 AM and remains open until 1:45PM. Auditions start at 11:15AM and end no later than 2:30PM. **The YMCA will not let Camper families enter the facility before 11:00AM** (no earlier, sorry no exceptions). The registration Check-In and Audition process can take between 45 minutes to almost 2 hours at peak times. Plan your arrival to allow your Camper to complete:

- **Registration Check-In** (about 30-45 minutes, longer if you have medications to turn in to the Camp R.N.)

- **Auditions:** Every year there are a significant number of musicians auditioning (especially on saxophone and trumpet) so plan accordingly:
 - Vocal Placement (5 to 15 minutes)
 - Instrument auditions: (2-5 min, however the wait can be 30 min to 45 min depending on number of auditions’).
 - Jazz Auditions: (5 min, with wait up to 30 to 45 min) If you have signed up for Jazz Band, there will be a Jazz Audition as well.

Forgot your Mandatory paperwork?
No problem, please pick up replacement forms at the HELP DESK on the Music Shell and fill it out while in line

We ask that you complete Registration Check-In in this sequence of tasks:

1. **Luggage Drop Off:** Please unload your Camper luggage into the designated areas: Senior Campers place luggage on the basketball court behind the Music Band Shell (Please refer to the map in the attachment). Junior Campers place luggage on the blue tarp above in Ohlone Cabin area (parking attendants will direct you). ***Please do not request to move your camper into their cabin.*** Cabin move in is done as an inaugural and important first Cabin Team-Building event with your Camper’s Counselor and fellow Campers prior to dinner after completion of Camp Orientation and Tour.
2. **Line-up and Mandatory Paperwork Check:** Senior Campers (Entering grades 9-12 in Fall 2023 or returning post-graduates) register on the Music Shell (stage left). Junior Campers (Entering grades 6-8 in Fall 2023 register stage right of the Music Shell.
 - a. To keep the lines moving quickly and efficiently we ask that you ensure all the Mandatory Paperwork is completed in line prior to getting to the Check-In Desk. (*Mandatory Forms: Medical Info, OTC Form, Insurance Form, YMCA Liability Waiver*).
 - b. All Parents with campers who take prescription medication must meet with Nurse on the shell. **If you have prescription medication, it is recommended you submit it to the Camp Nurse prior to lining up for Check-In.**
3. **Prescription Medication:** All Parents with campers who take prescription medication must meet with Nurse on the shell. If you have prescription medication, it is recommended you submit it to the Camp Nurse prior to lining up for Check-In.
4. **Registration Check-In Desk:** Campers Check-In at the respective locations (Senior Camp Boys and Senior Camp Girls on the Music Shell; Junior Camp Girls and Boys at picnic benches). Registration Coordinators will collect Mandatory Paperwork and provide Campers with their Camp Elective schedule, Name Tag, Camp Shirt, Audition Map, and Cabin Selection name-tag. We will validate your emergency contact information and ensure that the Camper is signed up for the right elective classes. If any changes are required, you will be directed to the **HELP DESK**. If you have prescription medication, and have not yet turned it in, you will be directed to the Camp Nurse Check-In. Parents can leave after registration or may stay through the auditions and full Camp welcoming and orientation at the Drake campfire. If you have signed up for any of the following elective classes or are interested in these additional activities, you will need to:
 - a. **ART Class:** ART Students who chose one elective period of ART will **need to pay an additional \$10 art supply fee**. Please bring a check or cash during the Saturday registration. Payment can be made at the Check-In or HELP Desks on the Music Shell.
 - b. **Audio Recording Techniques Class:** Students signed up for Audio Recording Techniques elective will need to bring a laptop. We apologize as registration to this class is limited and cannot be added.



- c. **Ukulele Class:** Students signed up for Ukulele elective will need to bring a ukulele to camp if you have one. If interested but you do not have access to a ukulele, please contact Camp, we have a few available for loan.
 - d. **Improv or Music Theory Elective Class:** Please pick up and complete placement evaluations. ***THIS IS NOT A TEST.*** You will be asked a series of questions that will allow us to ensure that you are placed with a group of your peers, so the class content is tailored to your specific needs.
 - e. **Personal Music Lessons:** Many of our Music Instructors and Coaches have graciously offered up their free time to provide one-on-one music lessons or coaching for Campers. A list of available instructors (and instrumentation) are available on the Music Shell. Each Lesson is \$45 for a 45-minute lesson. Please do limit your Camper to one lesson so that the opportunity can be provided to as many Campers as schedules allow. Music Lessons fill up quickly so if you are interested, we encourage you to sign-up prior to getting in line to Check-In. Signs-ups and payment can be made during registration Saturday, July 15th on the Music Shell.
5. **Cabin Selection:** Choose the cabin and cabin mates at an open sign-up. First come first served availability. Campers are not allowed to sign each other into a cabin. If you wish to get the same cabin as a friend, plan to arrive and sign up no more than ½ hour of each other, but that is not a guarantee that there will be enough spots for both or all your friends getting the same cabin assignment. First time at Camp? The Cabin Assignment staff will help you choose the right Cabin and Counselor. All of our Counselors are musicians and alumni of Music Camp that will ensure that Campers will get the most out the Camp Experience.
 6. **First Day Auditions:** Auditions will take place at quiet spots located across Camp. All String Instruments are auditioned in the Dining Hall and Patio. Vocal Placement evaluations are done in the Camp Picnic Area (near the pool). All other audition locations are shown on the Audition Map. There are several Camp Staff Guides located around Camp (as well as signs and maps) available to provide directions and assist you to find your Audition Location. The audition will consist of:
 - a. Complete your instrument placement auditions
 - b. Complete your vocal placement test.
 - c. If you signed up for Jazz Band as an Elective (Check your Elective List, you Received at the Check-In Desk): Complete your Jazz Band auditions

For more about First Day Auditions please refer to the Audition Section below.

Once you have completed your Auditions you have successfully completed your Registration Check-In. Time to relax, have lunch with your family, and enjoy the beautiful surrounds of the YMCA Jones Gulch Camp! Your next activity will be Welcome Orientation at 2:45PM.

First Day of Music Camp Begins!!

Hayward La Honda Music Camp WELCOME Orientation: Following completion of all Check-in Tasks and your audition(s) (at or about 2:30 or so (TBD)) Auditions will Close (Stop) and Campers will meet at Drake Campfire for welcoming remarks, camp procedures, and Camp personnel introductions. Parents are invited and may accompany campers to the Drake Campfire Orientation if they wish, but it is not a requirement.

At this time each Counselor will gather up their Cabinmates and head out for a Tour of Camp and detailed orientation on camp and cabin **Rules of Conduct.**

Didn't get a chance to complete your Audition before Auditions Close? ***NO PROBLEM.*** The Audition Adjudicator will locate you and make arrangements to complete your audition after dinner.

Saying Good-Bye to your Camper: Although Parents and Family members are invited to Drake Campfire Orientation, they are not invited to the Camp Tour, Orientation and Cabin move-in. Please keep this in mind so you can time your last good-byes prior to your Camper dismissal with their counselor to attend start their Camp Tour.

We believe this final good-bye is very important especially for first time Campers, so we encourage you to be prepared, Camper dismissal often comes up quickly in the Counselor introduction section so be ready...you can leave as they do and say your good-byes as they walk out of Drake Campfire!



Camp Tour and Cabin Move In: Campers will be provided with a comprehensive tour of camp, shown where they take meals, where their classes are located, where they sleep and how the camp population is divided (Senior Boy Campers in South Tolowa, Senior Girls North Tolowa, All Junior Campers in Wasiaata), Camp Nurse, Camp Store, YMCA Administration building, pay phones, etc. In addition, the Campers are divided up into four groups to discuss Camp and Cabin conduct. Following the Camp tour and orientation, Campers will gather their personal belongings and musical instruments for Cabin Move-In Activities.

First Day Dinner: Following move-in around 5:45 PM your Counselor will lead you and your cabinmates to the Large Dining Hall for the Welcome Dinner. Senior Camp will enter through the double doors on off the deck, and Junior Campers will enter through the Front Door to the left of the Dining Hall Fireplace. For this first meal you will be eating dinner seated together with your Counselor and Cabinmates. Over 300 people all enter the Dining Hall at once so stay with your Counselor and they will guide you to your designated table.

Orchestra, Wind, and String Ensemble Kick Off Meeting: Ensemble players will meet to get acquainted with fellow players and to find assignments for small groups, Quartets, Trios, and small ensembles will form to play music in an intimate setting with other musicians of similar expertise.



Master Classes: As a Welcome to our Campers, we provide a Master Class. Each year the Master Class is hosted by Maters Class Clinicians and Guest Artists. Master classes are conducted at Hayward La Honda Music Camp to inspire young musicians to greater heights. Professional musicians and masterful educators conduct individual master classes on their mastered instruments, giving young musicians insight to the unlimited possibilities of that instrument.

Get Acquainted Night: Time for an evening filled with Fun and Surprises!!

Quiet-Time Lights Out: Head back to your Cabin with your Counselor and cabinmates for evening close activities and Lights Out (usually between 10:30 and 10:45 the first evening).

First Day Audition Preparation

Auditions are mandatory for all campers to determine stand positions in symphonic band, wind ensemble, orchestra and, if applicable, and 5th period jazz bands. Part assignments, chair seating, and ensemble placement will be determined based on this audition.

Results are announced in First Day Ensemble Kick-off Meetings and/or Sunday Morning Rehearsals. Jazz Band placement will be posted at the Large Dining Hall before Lunch on Sunday.

Major Ensembles: Symphonic Band, Wind Ensemble, Orchestra



All musicians participate in one or two of three major ensembles: Orchestra, Symphonic Band, or Wind Ensemble.

Major ensembles and sectionals rehearse two to three times a day for 60-90 minutes, preparing for their Final Day Concert performance. Students are given several pieces of music to learn during the week.

While some initially doubt they'll be able to master the repertoire, year after year students discover that they are in fact very capable of rising to the challenge!

- Students should be prepared to demonstrate their abilities on one or two level-appropriate scales, sight reading, general musicianship, and range (for brass.)
- In addition, it is recommended that the student have a prepared piece/passage lasting no longer than about 1 minute. Prepared pieces do not need to be memorized, bring your music with you.
- This audition should last no longer than 3 to 5 minutes.

Jazz Band:

Musicians interested in playing in a Jazz Band should sign up for 5th Period Jazz Band elective. Jazz band instrumentation normally consists of trumpet, trombone, saxophones, and rhythm section (bass, guitar, piano, and drums). Jazz Bands rehearse once a day for 60-90 minutes, preparing for their Jazz Night Concert performance (Thursday Night). Each Jazz Band Director selects several pieces of music appropriate to the level of their Jazz Band (Jazz I-IV). A Jazz Lab workshop elective is available for all musicians wanting to explore playing jazz music (all instruments); this group will be introduced to and focus on strengthening the fundamentals of Jazz Band performance.

- Students having signed up for jazz band elective will be asked to demonstrate their abilities on scales, sight reading, and range (for brass.) This could be accomplished by playing a jazz piece lasting no longer than 1 minute.
- Students who improvise are encouraged to prepare a short piece that will demonstrate their improvisation skills. These students should bring a track on their phone or iPod to use as accompaniment.
- This audition should last no more than 3 to 5 minutes.



All Camp Choir: (Senior Camp Choir/Junior Camp Choir)

A long-standing tradition at Hayward La Honda Music Camp, is our All Camp Choirs. All musicians participate in one of two All Camp Choirs: Senior Camp Choir or Junior Camp Choir. **What? Sing in a Choir? YES!** Singing improves sight reading, improves posture, strengthens diaphragm and increases aerobic capability (singing is a workout!). All the basic elements of music – pitch, melody, harmony, timbre, rhythm, dynamics, expression and so on - can be learned through singing. In fact, because of the lack of an instrument, singing is the quickest and most direct way to learn and internalize music and has proven to be vital for developing a 'good ear' – and thus improves overall musicianship. All Camp Choir is consistently ranked as one of Campers favorite classes.

- All campers will take a vocal placement test at the picnic grounds near the pool
- Students will be asked to sing a few notes to determine placement (Soprano, Alto, Tenor, Bass) this is usually accomplished in no longer than 1-2 minutes.



What to Pack for Camp

PLEASE LABEL EVERYTHING OF VALUE!!

Pack in a suitcase, backpack, or top-zip type duffel bag; campers live out of this while at camp. Remember, camp beds with mattresses are provided so no sleeping pad is needed. Music Camp experiences warm (but not hot) and dry summers, with few days of average monthly temperatures above 70F. We are close to the coast, so mornings and evenings often are foggy or misty, warming up in the afternoon. Layers are a good idea as the weather changes throughout the day. Many night activities are outdoors, and it does regularly get cold (high 40s) in the evening and early morning.

Personal Belongings

- **Clothes (in one suitcase):** mountain-type clothing for 8 days, including swimsuit and towel, warm jacket (for those cold nights and mornings), sweatshirt, and good hiking/walking shoes (lots of walking around camp and for hikes).
- **Concert Clothes:** Please bring one semi-formal Saturday Concert outfit. Boys (dark slacks/Dockers, dress shirt, tie. Girls (dress, or nice blouse and dark pants)
- **Sleeping Gear:** Sleeping bag and pillow.
- **Personal Items:** Towel, soap, toothbrush, toothpaste, comb, shampoo, shaving gear, personal hygiene needs, insect repellent, suntan lotion, personal first aid needs, hat, coat hanger, and sunglasses.
- **Other items:** You may also wish to pack a flashlight, camera, music, (it is okay to use your cell phone for these) reading material, baseball glove, and/or other recreation equipment. Items for Skit Night
- **Electronic Equipment:** Cell phones, music players and recorders, metronomes, tuners, alarm clocks, cameras, electric shavers, blow dryers, curling irons, etc. are allowed at camp, though we do not take responsibility for broken or lost items.



Walkie Talkies are prohibited at camp and will be held until the end of camp if brought. Walkie-Talkies interfere with YMCA staff communication. **There is NO Cell phone reception or Camper Wi-fi at camp. Since there is NO Internet please leave Laptops, iPad at home. Only electronic music and music recording students will have a laptop for class only.**

- **Activity / Camp Store Money:** All elective recreational activities (archery, zip line, canoe, hiking, basketball, baseball, etc.) are free. There is also a camp store from which post cards, stamps, YMCA shirts, batteries, etc. can be purchased. Please use discretion with how much money your child brings.

Musical Instrument

Campers provide their own instruments (unless you play piano or percussion). Please make sure the instrument is in good working order.

- **Instrument:** Each camper is responsible to bring his / her primary instrument and any secondary / jazz instrument(s) that are listed on the completed application, not including pianos. If an instrument is not owned, please make arrangements to borrow one.
- **Music Stand:** Each camper is responsible to bring his or her own music stand. Please label, as these are most easily lost or forgotten. ***Bring Clothes Pins to secure Music – It gets windy at Camp!!***

- **Instrument Stand (optional):** A instrument stand helps hold the instrument in a safe and predictable position in class when the camper is not playing it.
- **Pencil / Manuscript Paper:** All campers must bring a pencil and manuscript paper for class notes, music markings, etc.
- **Specific Instrument Needs:**
 - *Reed Players:* Extra reeds, cork grease, cleaning tools.
 - *Brass Players:* Valve oil, applicable mutes, slide grease, water bottle (trombones), cleaning tools.
 - *Percussion Players:* Sticks and accessories. **Campers wishing to perform in a jazz band must bring their own drum sets.** Label every separate piece. Place all drum sets on the basketball court behind the band shell during Saturday July 21st registration.
 - *String Players:* Rosin, extra strings, towel to wipe any wetness from their instruments, chin rest, pegs, etc. **A note to cellists and bassists:** Please pack an endpin protector; our floor will thank you (!!)
 - *Amplified Jazz Instruments:* Amps, cords, extra strings, extra fuses, covers, etc.



Lost and Found

Each year, at the end of every session, we find a wide assortment of unclaimed items left at camp. Please make sure to double check your Cabin, the dining Hall, Rehearsal Areas, the Music Shell, and deck railings for things left behind. If labeled, these are collected, stored at camp until the Final Concert Day. We will make numerous announcements during the Last Day Concert regarding Lost & Found Items and where to collect them. Try as we might we end up with sheet music, music stands, mouth pieces, and clothing items...if left unclaimed at the final concert they will then brought back to the Music Camp home office. Call or email if you are missing anything and we can look to see if we can find it for you. Unclaimed items are discarded or donated, whichever is more appropriate.

Camp Decorum

We hold our staff and campers to a high standard of conduct. We are here to make music and have fun in a safe and secure environment. The Hayward-La Honda Music Camp has defined rules and regulations, which have been established for the benefit and welfare of all campers. Campers are briefed on camp rules the first day and copies of our rules are posted throughout the camp. Campers are always expected to abide by these rules and conform to the established guidelines of both the Music Camp Staff and the YMCA while at camp. A copy of the camp rules can be found in this handbook.

- Any deviation from the rules and regulations that the staff deems inappropriate may result in dismissal from camp for the camper involved.
- Any camper who possesses or is engaged in the use of alcoholic beverages or the unauthorized use of drugs will be immediately dismissed from the camp. Theft, fighting or vandalism may also lead to dismissal from camp. Parents will be required to pick up their child from camp.
- Counselors and staff will work to resolve minor problems and parents may be contacted by the Camp Director. If a camper exhibits moderate to severe emotional issues, they may also be sent home for an evaluation.
- Other camp rules regarding no entry into other cabins, attend all classes and night activities, cleaning cabins daily, staying in cabins after lights out etc. will be reviewed several times at camp
- Our goal is to provide a safe and wholesome learning atmosphere for all our campers. Thank you for your help and support.



General Daily Schedule (subject to slight changes) –

Daily Activities

Daily schedule consists of 3 periods of core classes and 2 periods of elective classes.

6:45	Reveille
7:45	Breakfast
8:30	Period 1 – Jr. Camp Chorus, Sr. Wind Ensemble, Symphonic Band Sec./String Sectionals, Jazz Piano
9:40	Period 2 – Jr. Concert Band/Jr. Orchestra, Vocal Majors/Technique Sr. Symphonic Band, Sr. W.E. sec, Sr. String Orchestra Jazz Piano
10:50	Period 3 – Jr. Wind Ensemble/Sr. Full Orchestra, Vocal Major/Sectionals, Jazz arranging, Sr. Camp Chorus, Jazz Piano
12:15	Lunch
12:45	Rest Time
1:20	Period 4 – Elective Period
2:30	Period 5 – Elective Period
3:30	Recreation Time
5:30	Dinner
6:15	Recreation Time/Quiet Time/Staff
7:30	Evening Activity
10:15	Lights Out



Jazz

Evening Activities

Evening activities are provided for the recreation of the campers and the presentation of music they have worked on in small ensembles throughout the week.

- **Saturday:** Master Class Presentation, 4th-5th period Chamber groups meet, Get Acquainted Night
- **Sunday:** Dance, Movie Night, optional night hike
- **Monday:** Coyote Bowl Campfire Staff Entertainment
- **Tuesday:** Cook-out, Skit Night
- **Wednesday:** Chamber Music Night
- **Thursday:** Jazz Night
- **Friday:** Special Theme Dinner, Dance, Movie Night

Final Concert

We cordially invite each camper's family and friends to attend the final concert, which will be held at the Music Shell at 12:45 p.m. on Saturday, July 22th. The YMCA will open entry gates at 12 NOON. We will not be able to allow any Camper Families into Camp until we have successfully concluded the final rehearsal after 12 NOON.

If you wish to come early and bring a picnic lunch, there are tables available in the picnic area near the swimming pool. Please bring a blanket or folding chair.

**Our scholarship fundraising auction and raffle will also be held during the final concert.
This year we can accept credit cards along with checks or cash.**

Please plan on staying for the entire concert. We plan that our concert will conclude by 3:15. All the groups have worked hard for this performance. If you must leave early, please park in an approved area that does not require you to drive past the Shell.

Looking forward to seeing you at camp!!





Hayward La Honda Music Camp Handbook

FAQs – Frequently Asked Questions

1. Are the meals prepared on-site?

The kitchen at Hayward La Honda Music Camp offers a high-quality menu with a wide variety of fresh, nutritious, and delicious choices. Meals are prepared fresh each day by the on-site YMCA Chef and Kitchen Staff. There will always be a range of options. Vegetarian options are offered at each meal.

2. How do I deal with my Camper's Food Allergies?

Our kitchen will happily accommodate a range of food restrictions and sensitivities including gluten intolerance, nut allergies, or lactose intolerance. Allergies or sensitivities should be described on the medical history form. This is where to tell us about any special food needs or allergies so that we can be sure to provide enough of each type of food. In the case of a very restricted diet, parents may be contacted to clarify the concerns and discuss the possibility of supplemental foods. **Note:** we do not comfortably accommodate vegan diets, although we will have some vegan options.

3. Can I celebrate my Camper's Birthday at Camp?

No one will miss a birthday while at Camp! Staff is notified when a camper has a birthday while at camp and a celebration with their Cabinmates and friends is prepared. Campers are serenaded at dinner time by the entire camp and are given a special dessert to mark their special day.

4. What do I need to do if I need a friend or family member take a Camper home or off-site?

If you want to allow someone **other than yourself** to take your camper or carpool home from camp be sure to send us a note, or lahondamusiccamp@gmail.com. Without written authorization we will not let them leave Camp.

5. What is available at the Camp Store?

The store is open for about an hour every day during free time in the afternoon, and again after dinner. Our camp store is stocked with a variety of YMCA merchandise, food treats, and camp necessities such as batteries, shampoo, toothbrushes, etc.

6. Are snacks available during the day?

Water stations are set up throughout the camp and fresh fruit is always available for campers at the dining hall. When available, the store sells a selection of candy, treats, and sodas. Campers are limited to two sugary snack items per day.

7. How do I ensure my friends and I end up in the same cabin? (Cabin Assignments)

Cabin assignments are made during First Day Check-In. Campers are invited to arrive at Camp and Check-in with their friends, so you can choose a cabin together. We will do our best but cannot guarantee that we will be able to honor all rooming requests.

8. What if I get Homesick?

Homesickness is a very common, though unwelcome, occurrence at camp and usually passes after about a day. The counselors and staff, mostly ex-campers themselves, are very familiar with its effects and with the best ways to counteract it. All staff receives training in how best to keep campers busy and happy and free from distress.

What you can do to help your camper: Maintain a positive attitude about camp while packing, getting ready, and dropping your camper off. Keeping goodbyes short and sweet is best, showing your camper that you have confidence they are going to have a great time. **Never say you will pick your child up if they are unhappy**, instead keep telling them how great camp is going to be. If you receive call from your camper that is full of homesickness, try not to be

overly concerned. In most cases the difficulties adjusting to camp are over in the first 24 hours. This means your camper is probably fine and having a great time. In the rare event that a camper's homesickness is chronic or acute, rest assured that we will contact you.

9. Can I send my Campers Mail?

Everyone loves to get mail; just remember to keep the message upbeat and positive. Allow 2 to 3 days for mail and packages to reach camp. Putting things in the mail before your camper leaves can be a good idea. Mail is collected from the YMCA Post Office every day to be distributed at camp. If you mail something in the latter half of the week it may not arrive before Final Concert Day. Care packages are welcome! Those containing food are allowed but should be very limited; something that can be consumed in one snack time and can be shared with cabin mates. There is no food storage in the cabins and the camp kitchen cannot handle camper snacks.

*Note: please **do not** send orders from large, online companies the YMCA Administration office is not staffed to accept these packages and the orders are likely to get lost.*

10. Can I call and talk to my Camper?

Campers do not have phone access during camp and nor can parents speak directly to their campers. Emergency messages can be delivered to campers via the camp office at: (650) 747-1200. The office is staffed during normal business hours and any message will be delivered at the next convenient moment, usually during the next meal. If you have any concerns or are worried, our Camp Nurse or Camp Director will be happy to return your call and talk to you about how your camper is doing. If there is an emergency after hours you can reach the camp director by calling (650) 747-1200 and it will roll over to the director's cabin.

11. Can my friends or family visit me during Camp?

Please do not invite your family or friends to visit camp during the week; it can distract the campers from their activities and may even engender homesickness. Please do plan on having your friends and family attend the Final Concert Performance. If there is an emergency issue, please call the Camp Director to discuss a visit.

12. Is the Camp have ADA Accessibility?

Hayward La Honda Music Camp concert facilities are fully accessible. ADA parking located throughout Camp. There are paved paths leading from the blacktop to the performance amphitheater, many of the cabins, as well as to ADA restrooms and the dining hall. When you enter Camp be sure to identify the need to access the ADA parking, and you will be directed to the spot closest to your destination.

13. Can I bring my dog or other pet to Camp?

NO. Please leave your dog or pet at home on concert days unless they are a certified service animal. The SF YMCA does not allow pets in Camp. This is a wildlife preserve. Pets can be disruptive and there may be pet phobic audience members.

14. Is there a place to laundry my clothes?

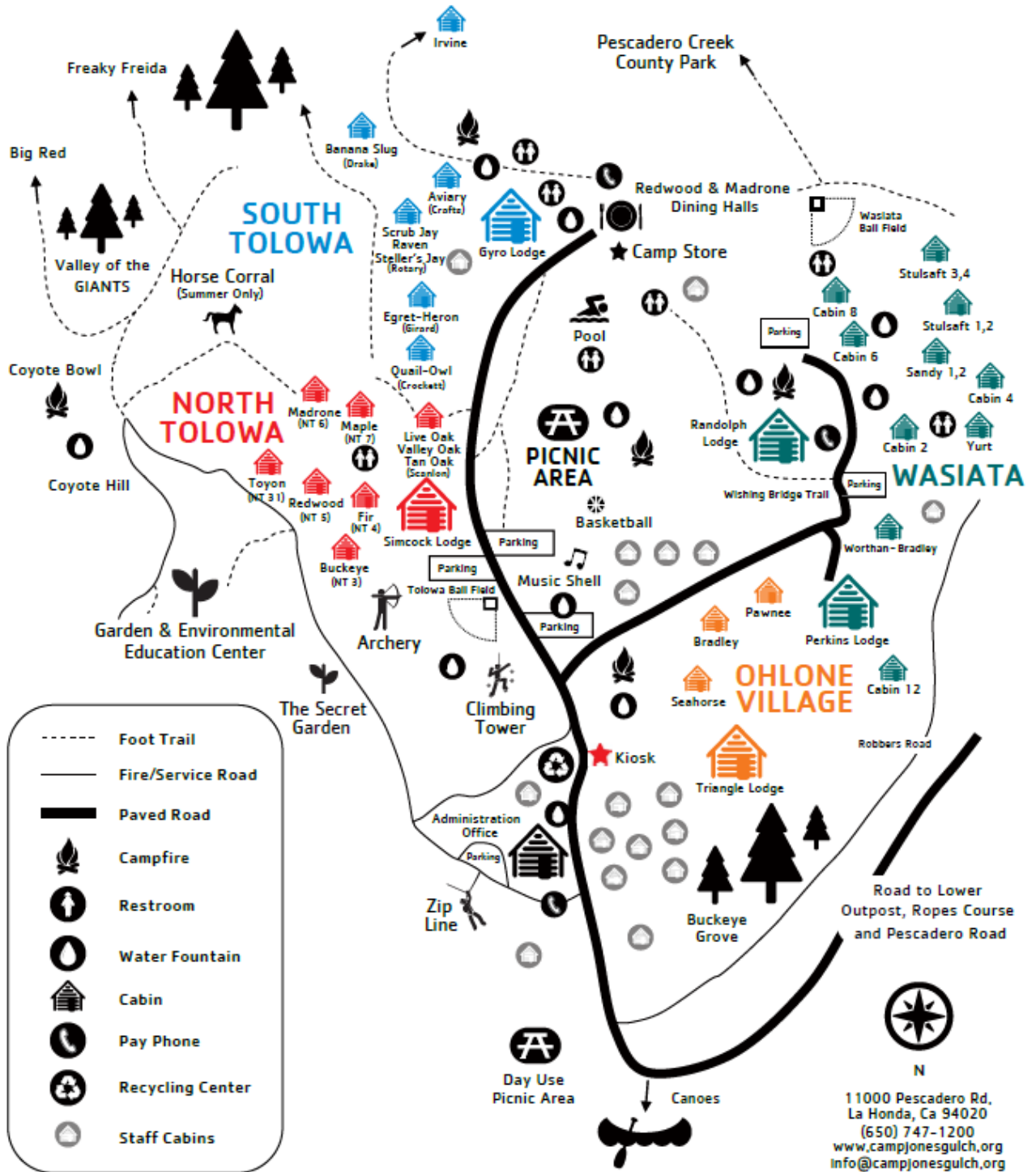
There are **very limited laundry facilities** at Music Camp so pack enough clothing for the entire session. Parents planning to attend the final day Concert session concert can bring extra, clean clothes to make an exchange of laundry with their camper.



Rules of Camp

Our goal is to provide an uninterrupted and wholesome learning atmosphere for all campers. With this in mind we have established the following rules:

- Know and observe the daily schedule, and special schedules related to the first and final days of camp. Attend all rehearsals, meals, and special activities.
- Your Counselors oversee your safety and well-being. Do what is asked by your Counselor. If you are asked to do something that you feel is not right, talk to the Counselor Coordinator or Camp Nurse.
- Never leave camp without permission. Stay within the camp boundaries at all times. This is for your safety and protection.
- Rehearsal environments are built from the premise of mutual respect. Campers will always contribute to ensemble development through both musical and behavioral discipline.
- Follow the Audience Golden Rule: Give all performers your attention and respect, both in informal "meal" and "campfire" performances, and formal concerts given throughout the week.
- Swimming in the pool is only allowed when there is a Lifeguard present, at camp recreation times. Stay away from the Pool and the Camp Pond unless you are with a Counselor or CIT during hikes or recreation times.
- Do not hit anyone while at camp, in anger or in fun.
- Do not litter.
- Do not touch anyone else's personal belongings, especially instruments, without permission. This includes pianos and percussion instruments.
- No smoking or vaping. Matches and lighters are not allowed in camp. Counselors will take away any of these items that they find.
- Observe lights-out and stay in your assigned cabin until reveille.
- Clean your cabins daily...you don't want to attract animals or insects into your Cabin!
- Respect the beauty of Camp - Walk on designated trails only, for the safety of you, others, and the environment.
- Non-supervised entry into any cabin other than your assigned cabin is prohibited.
- The possession or use of any non-prescription substance, including drugs and alcohol is prohibited.
- Do not damage, destruct, abuse or vandalize any personal or camp property.
- **Stay healthy:** drink lots of water, wash your hands before meals, get plenty of sleep.



CAMP JONES GULCH
 YMCA of San Francisco

